

# Enharmonic Spelling - ID - Drill #2

Circle the number only if the corresponding example is an enharmonic spelling.

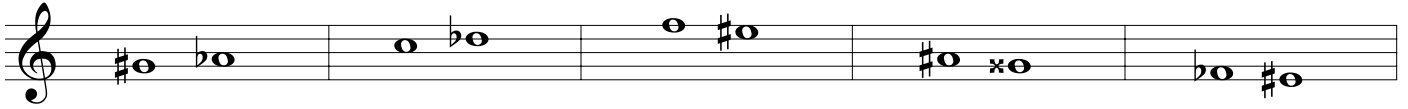
1.

2.

3.

4.

5.



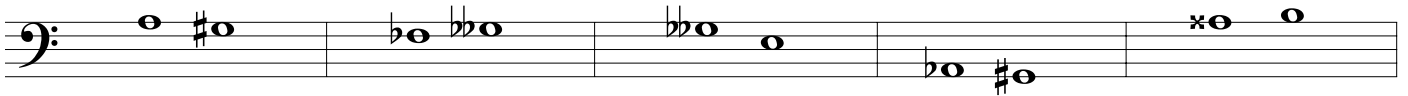
6.

7.

8.

9.

10.



11.

12.

13.

14.

15.



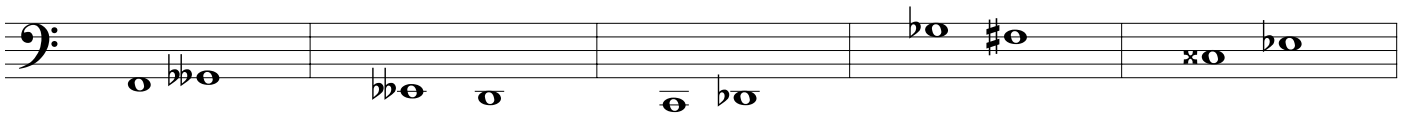
16.

17.

18.

19.

20.



21.

22.

23.

24.

25.



26.

27.

28.

29.

30.

